



# INTRODUCTION TO SCV VALVE

[www.scvvalve.com](http://www.scvvalve.com)

- THRU CONDUIT GATES - SLAB & EXPANDING
- FULL PORT SWING CHECKS
- 3-PIECE TRUNNION BALLS
- LUBRICATED PLUGS
- FLOATING BALLS
- PISTON CHECKS
- WEDGE GATES
- GLOBES



## THRU CONDUIT GATES - SLAB & EXPANDING

### Design: API 6D

Sizes: 2" - 42"

Class: 150 - 1500

Standard stocking item.

### Design: API 6A

Sizes: 9", 11" & 13-5/8"

Pressure: 2000, 3000, 5000

Limited inventory availability. All sizes and pressure classes made to order.



## 3-PIECE TRUNNION BALLS

### Design: API 6D

Sizes: 2" - 42"

Class: 150 - 2500

Standard stocking item.

### Design: API 6A

Sizes: 2-1/16" - 7-1/6"

Pressure: 2000, 3000, 5000

Limited inventory availability. All sizes and pressure classes made to order.

Bore Coating: Scotchkote™ 134



## PISTON CHECKS

### Design: API 6D

Sizes: 2" - 24"

Class: 150 - 2500

Standard stocking item.



## FULL PORT SWING CHECKS

### Design: API 6D

Sizes: 2" - 36"

Class: 150 - 2500

Standard stocking item.



# PRODUCT LINE

## FLOATING BALLS

**Design: B16.34**

Sizes: 1/2" - 12"

Class: 150 - 1500

Standard stocking item.



## LUBRICATED PLUGS

**Design: API 6D**

Sizes: 1/2" - 30"

Class: 150 - 2500

Standard stocking item.



## GLOBES

**Design: API 623**

Sizes: 2" - 24"

Class: 150 - 2500

Limited inventory availability. All sizes and pressure classes made to order.



## WEDGE GATES

**Design: API 600**

Sizes: 2" - 48"

Class: 150 - 2500

Limited inventory availability. All sizes and pressure classes made to order.



## GEOTHERMAL VALVES

### THRU CONDUIT GATES - SLAB & EXPANDING

**Design: API 6D**

Sizes: 4" - 24"

Class: 150 - 900

## WEDGE GATES

**Design: API 600**

Sizes: 2" - 12"

Class: 150 - 900

Limited inventory availability. All sizes and pressure classes made to order.

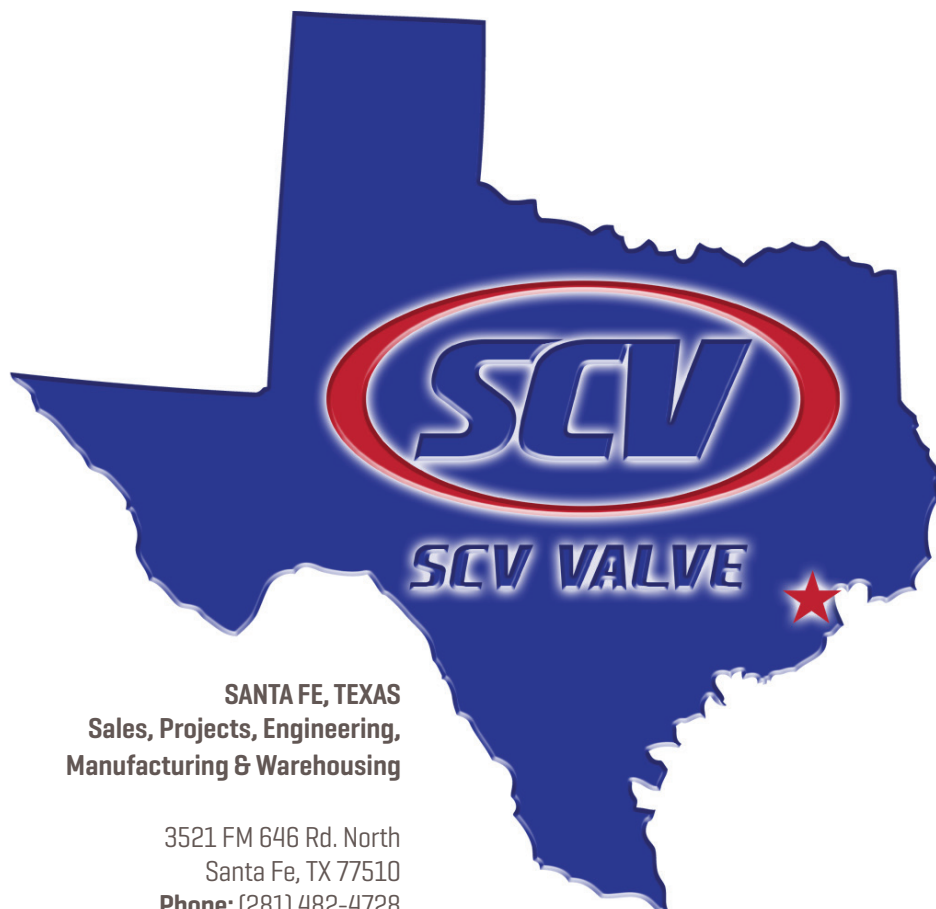


# the SEPARATION

In October 2017, SCV Valve, LLC completed the acquisition of the SCV brand, all intellectual property, and inventory from a previous partnership with Southern California Valve.

All operations in California ceased and were moved to the SCV Valve, LLC manufacturing complex in Santa Fe, TX.

As a part of the agreement, Southern California Valve canceled their API 6D & API 6A licenses and no longer manufactures valves. SCV Valve, LLC continues to hold both API 6D & API 6A monogram licenses for the SCV brand in Santa Fe, TX.



**SANTA FE, TEXAS**  
**Sales, Projects, Engineering,**  
**Manufacturing & Warehousing**

3521 FM 646 Rd. North  
Santa Fe, TX 77510  
**Phone:** (281) 482-4728  
**Fax:** (281) 482-9728

## end-user APPROVALS

SCV is pursuing key end user approvals. Below are a few end user approvals our company has achieved.

### End-User Approvals

- Baltimore Gas & Electric
- Boardwalk Pipeline
- Buckeye Partners
- Canadian Natural Resources
- Cenovus
- Centurion Pipeline
- Chevron
- Delek Logistics
- Delmarva Power
- Denbury Resources
- Ecopetrol
- Enbridge
- Enlink
- Energy Transfer
- Enterprise Products
- Equitrans
- Eureka
- EP Energy
- EPIC Midstream
- GE Oil & Gas
- Howard Energy
- Hudson Ranch Energy Services
- Ironhorse Midstream
- Jefferson Energy
- Keyera Energy
- Kinder Morgan Nat Gas & CO2
- Louisville Gas & Electric
- Lucid Energy
- Marathon Pipeline
- Medallion Midstream
- Momentum Midstream
- New Jersey Natural Resources
- NextEra
- OXY
- PECO Energy
- Phillips 66
- Pinion Midstream
- Pinnacle Midstream
- Rangeland Energy
- Repsol
- Saipem
- Salt Creek Midstream
- Sandridge Energy
- Senex Energy
- Shell Canada
- Tallgrass Energy
- Targa Resources
- TC Energy
- UGI
- Washington Gas
- Williams Energy



## ready-to-ship INVENTORY

SCV maintains a large inventory of carbon steel and stainless steel valves for the midstream and industrial sectors to support customer short lead time requirements.

### API 6D PRODUCTS

- Thru Conduit Gate Valves
- Trunnion Mounted Ball Valves
- Floating Ball Valves
- Full Port Swing Check Valves
- Piston Check Valves
- Lubricated Plug Valves

API 6D Products: ANSI pressure classes range from 150# to 2500#.

## made-to-order INVENTORY

SCV maintains a limited inventory of API 6A, API 600, & API 623 products, however, all sizes and pressure classes are available with manufacturing lead time.

### API 6A PRODUCTS

- Thru Conduit Gate Valves
- Trunnion Mounted Ball Valves

API 6A Products: ANSI pressure classes range from 2000# to 10,000#.

### API 600 PRODUCTS

- Wedge Gate Valves

API 600 Products: ANSI pressure classes range from 150# to 2500#.

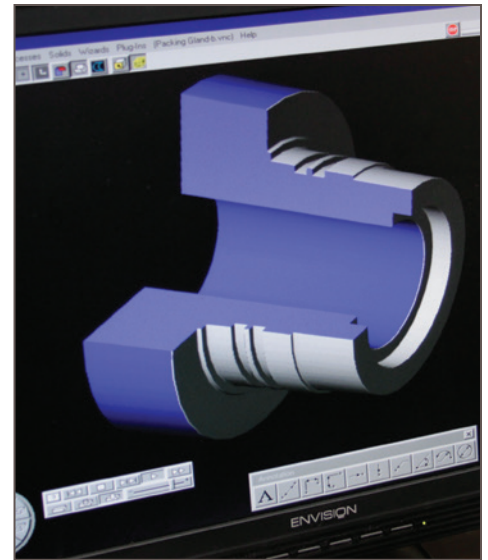
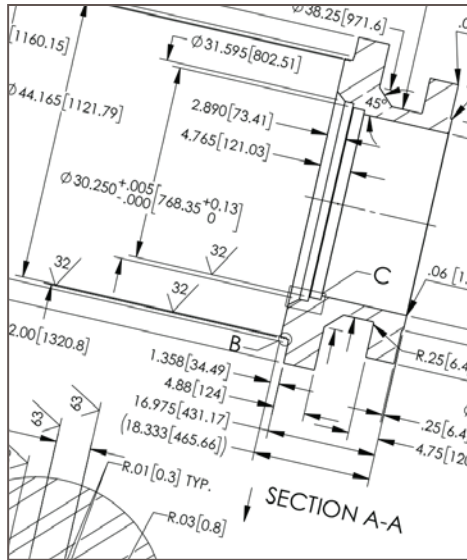
### API 623 PRODUCTS

- Globe Valves

API 623 Products: ANSI pressure classes range from 150# to 2500#.

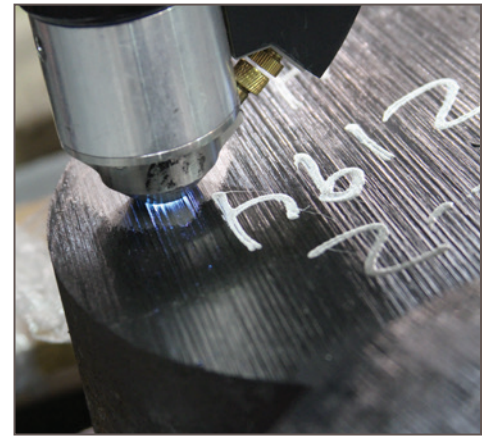
# ENGINEERING

Engineering – All API 6A & API 6D valves are manufactured to proprietary SCV engineering drawings with design calculations performed by a third party PE.



# non-destructive EXAMINATION

SCV is committed to manufacturing valves of the highest quality which is why each order for API 6D cast body valves is qualified with our rigorous NDE protocol.



# AUTOMATION

SCV can source, mount, set stops, and function test electric, pneumatic, or hydraulic actuators on any of our quarter turn or linear isolation valves. We are actuation brand neutral. All SCV quarter turn and linear isolation valves come standard with an ISO mounting plate.



## API 6A Certification



## Canadian Registration Numbers

- Alberta
  - 0C07063.2
- British Columbia
  - 0C07063.21
- New Brunswick
  - 0C07063.27
- New Foundland & Laborador
  - 0C07063.20
- Northwest Territory
  - 0C07063.25
- Novascotia
  - 0C07063.27
- Nunavut
  - 0C07063.2N

## API 6D Certification



- Manitoba
  - 0C07063.24
- Ontario
  - 0C07063.25
- Prince Edward island
  - 0C07063.29
- Yukon
  - 0C07063.2

## ISO 9001:2015 Certificate



## CE PED Certificate



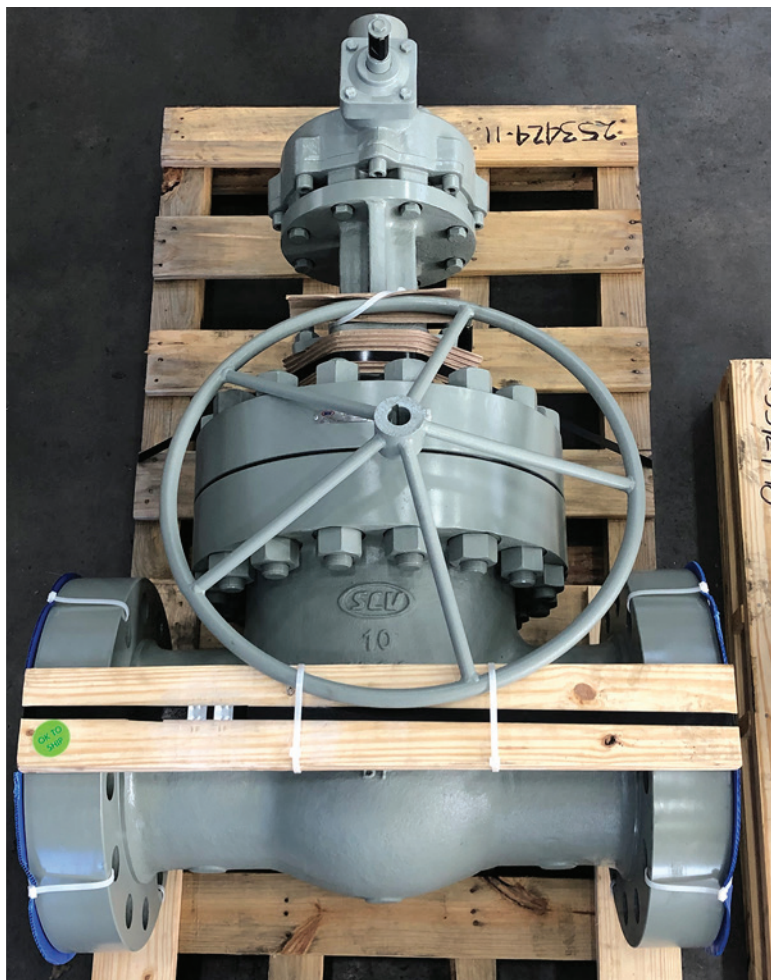
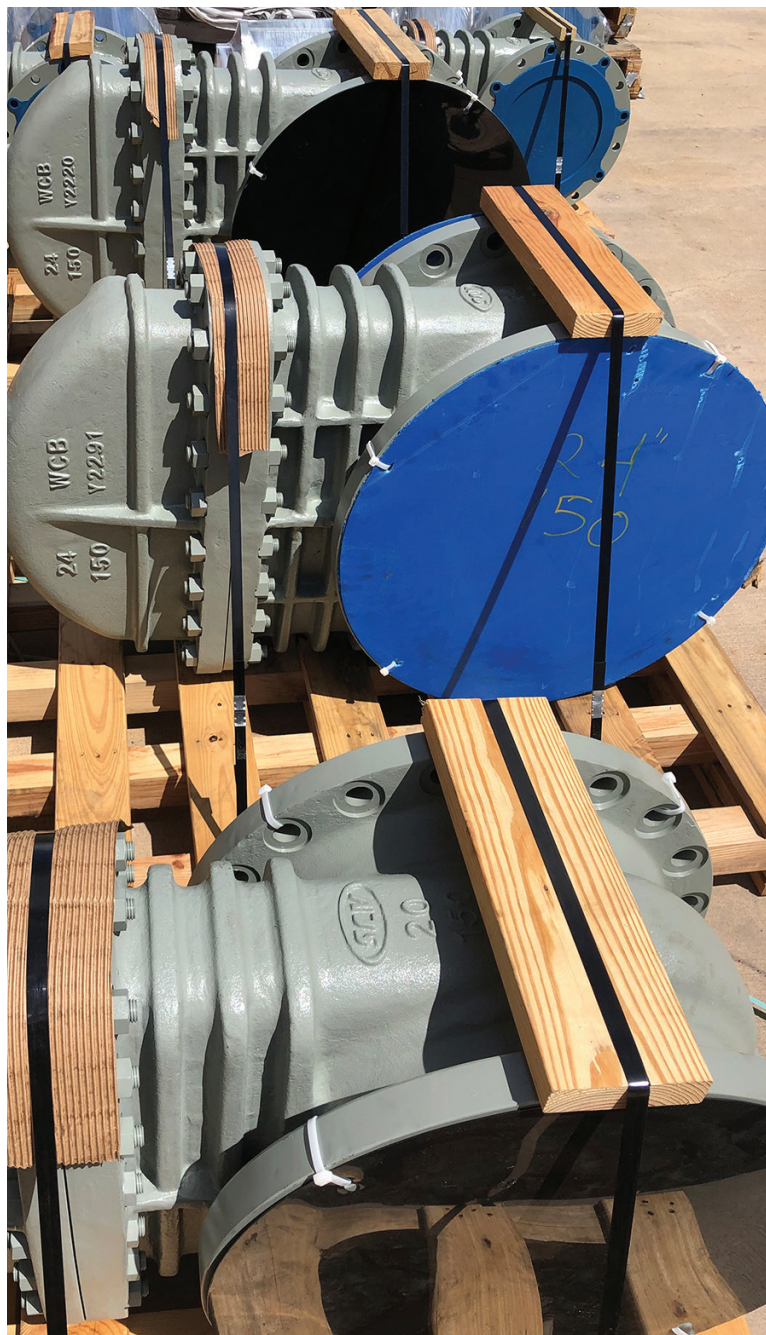












# YOUR GEOTHERMAL VALVE PARTNER

Keepin' it clean!



For more information, please visit at [www.SCVVALVE.com](http://www.SCVVALVE.com) or call (281)482-4728.

## Harness Earth's Energy

As the demand for green energy skyrockets, sources for renewable energy plants increase daily. Geothermal Power Plants satisfy this demand very well with a minimal footprint and little impact on the environment. Geothermal energy is constantly produced within the earth and is a very clean, natural, reliable, and renewable energy source. The controlled capture and processing of this high-heat, pressurized release of thermal energy requires precision engineering and equipment.

Of the three types of Geothermal plants [Dry Steam, Flash Steam and Binary Cycle] high-quality, high-performance valves are critical components for successful geothermal energy conversion and delivery. All three geothermal power plants utilize heat in the form of steam, brine and/or heat transfer fluids to activate steam turbines which in turn produce electricity.

SCV manufactures a complete line of low-maintenance, dependable Thru Conduit Gate and Wedge Gate Geothermal Valves designed for this specific application and are made of materials that resist the inherent impurities contained in the process fluids and gasses, silica scaling [which can cause build-up, valve leakage and/or complete valve failure] and high pressures and heat.



The SCV Geothermal Valve Line has been proven to operate efficiently at temperatures well above the required specifications [700°F/371°C] while offering minimal pressure loss.

### APPLICATIONS

- Production Wells
- Processing
- Injection Wells

### SCV GEOTHERMAL VALVE PRODUCTS

**Thru Conduit Expanding & Slab Gate Valves**

**Size:** 4" thru 24"

**Class:** 150 thru 900

**Wedge Gate Valves**

**Size:** 4" thru 24"

**Class:** 150 thru 900



**SCV VALVE**  
Innovative Valve Solutions®

# PRESSURE BALANCED LUBRICATED PLUG VALVE

[www.scvvalve.com](http://www.scvvalve.com)

## NEW DESIGN, BETTER PERFORMANCE, IN STOCK, READY-TO-SHIP!

### Standard Features

- Ready-to-ship inventory up to 16"
- Pressure classes 150 to 2500
- 410 SS trim with low friction Nitride surface treatment
- Easily adapted for vertical orientation service
- Improved grease flow on plug
- Patterns: Short, Regular & Venturi
- ISO mounting plate on all sizes
- 2" square operating nut, 4" & up
- 316 SS fittings
- Metal-to-metal seated
- API 6D design & tested
- Triple barrier stem seals
- WCC & LCC body materials
- Fire Safe Design: API 6FA/BS 6755



Call (281) 482-4728 today for fast delivery!

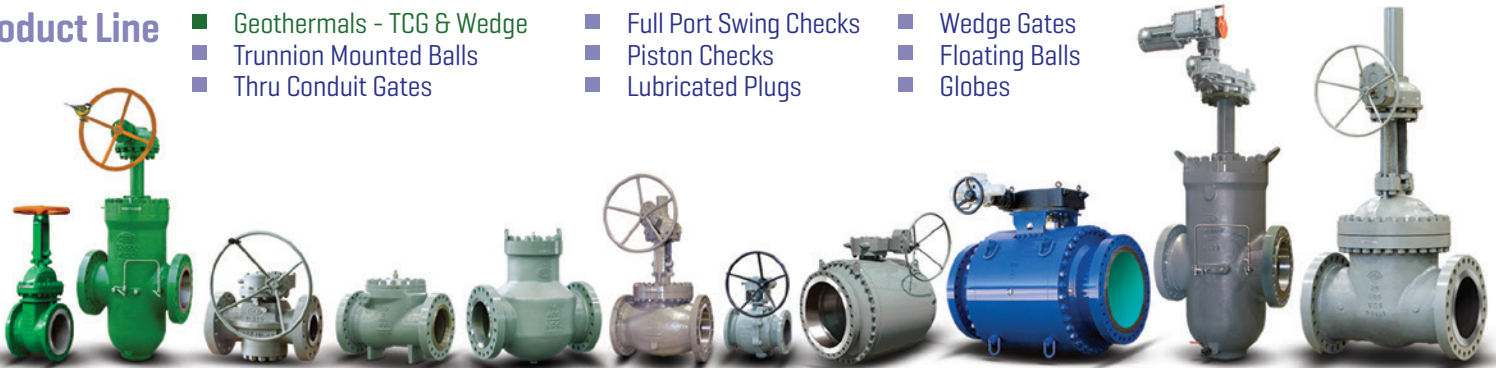


### Product Line

- Geothermals - TCG & Wedge
- Trunnion Mounted Balls
- Thru Conduit Gates

- Full Port Swing Checks
- Piston Checks
- Lubricated Plugs

- Wedge Gates
- Floating Balls
- Globes



# THRU CONDUIT GATE VALVES

[www.scvvalve.com](http://www.scvvalve.com)

## MIDSTREAM PIPELINE GATES

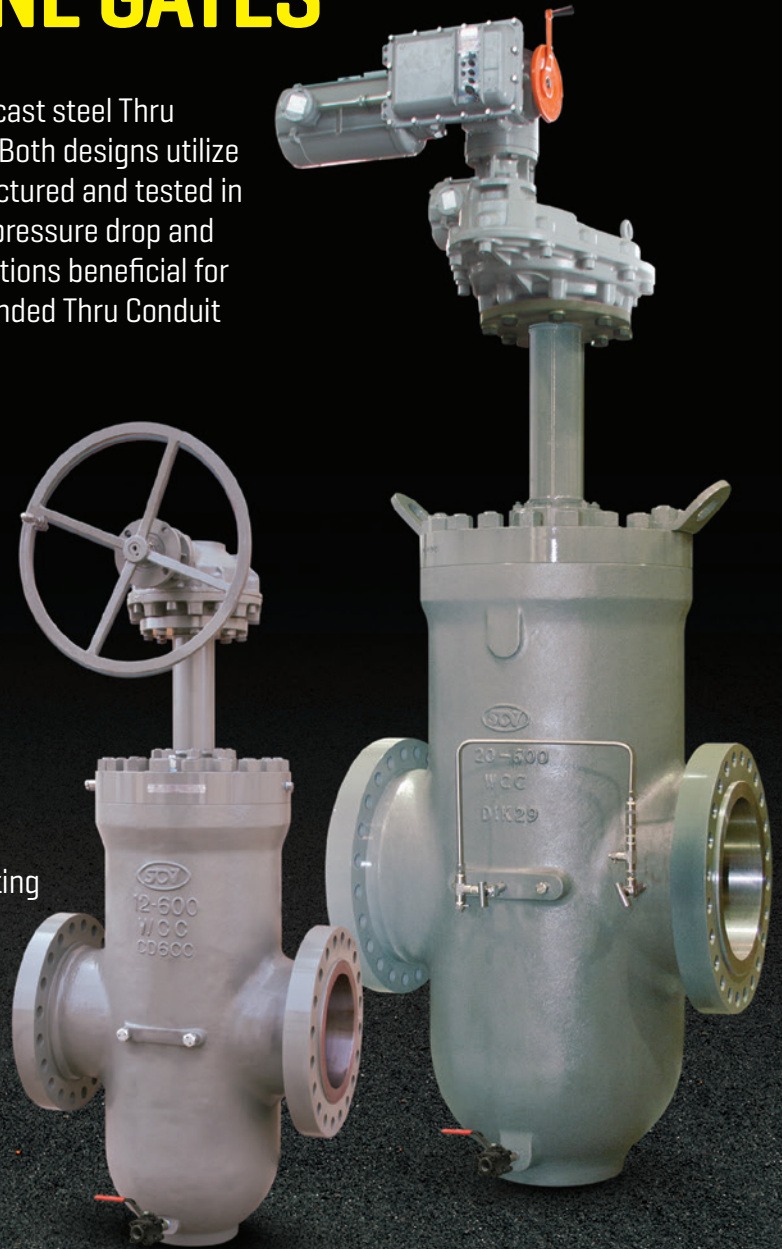
SCV VALVE manufactures some of the most dependable cast steel Thru Conduit Slab and Expanding Gate Valves in the industry. Both designs utilize flanged and butt-weld end connections, and are manufactured and tested in accordance with API 6D. The full port design minimizes pressure drop and turbulence. The SCV design offers many features and options beneficial for oil, gas, and liquid applications making it the most demanded Thru Conduit Gate on the market.

### Standard Features

- Sizes: 2" thru 42"
- Class: 150# thru 1500#
- Basic Design, Inspected & Tested: API 6D
- Face-to-Face Dimension: ANSI B16.10
- Flange End Dimension: ANSI/ASME B16.5 [2" to 24"], ANSI/ASME B16.47 & MSS SP-44 [26" & up]
- Butt-Weld End Dimension: ANSI/ASME B16.25
- Fire Safe Design: API 6FA
- Double block and bleed capabilities
- Secondary sealant injection at seats and stems
- Optional by-pass system for thermal cavity relief venting
- Full port thru conduit for passage of pigs
- Seals at low and high pressure

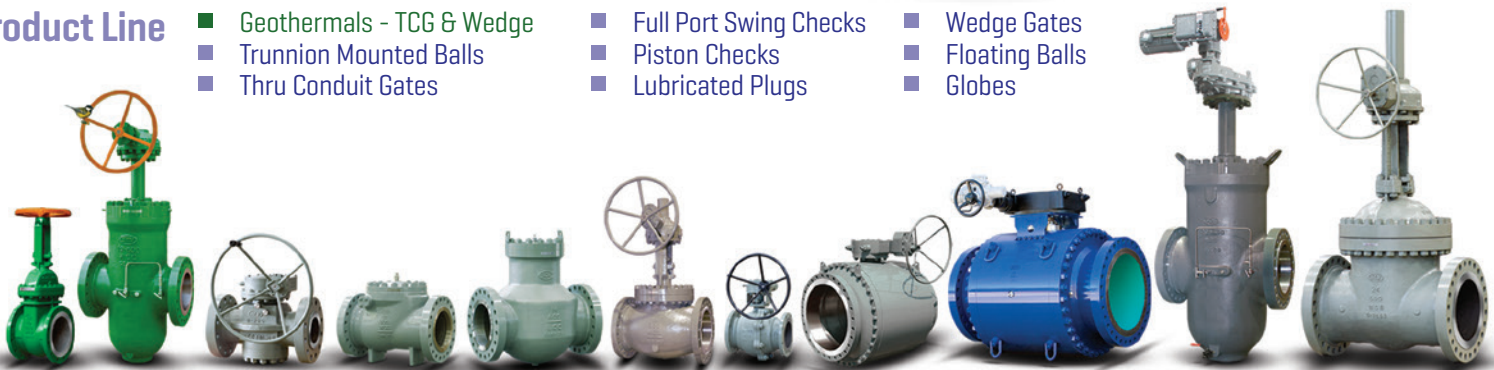


Call **[281] 482-4728** today for fast delivery!



### Product Line

- |                             |                          |                  |
|-----------------------------|--------------------------|------------------|
| ■ Geothermals - TCG & Wedge | ■ Full Port Swing Checks | ■ Wedge Gates    |
| ■ Trunnion Mounted Balls    | ■ Piston Checks          | ■ Floating Balls |
| ■ Thru Conduit Gates        | ■ Lubricated Plugs       | ■ Globes         |



# TRUNNION BALL VALVES

[www.scvvalve.com](http://www.scvvalve.com)

## QUALITY BUILT API 6D TRUNNIONS

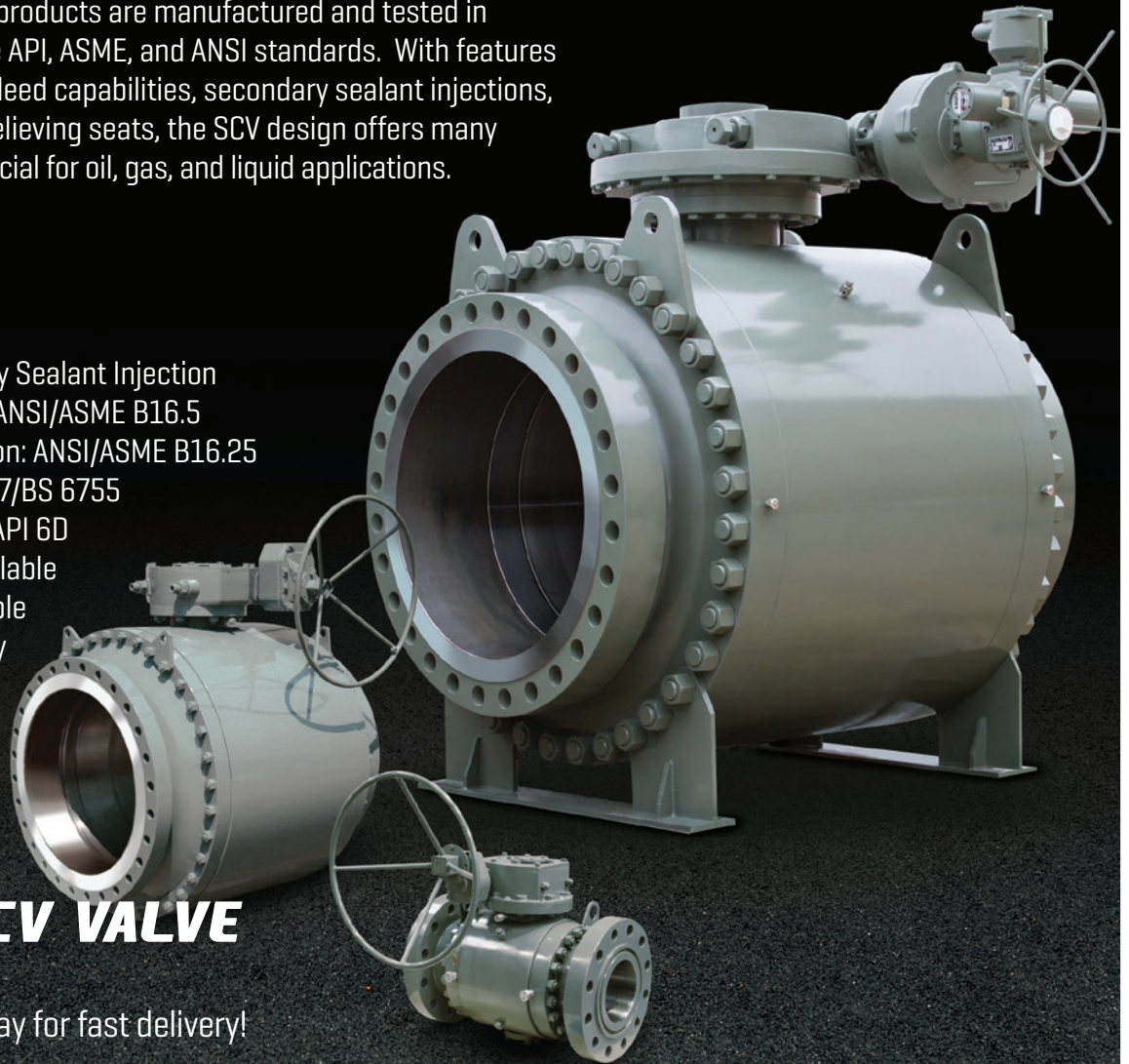
SCV VALVE manufactures some of the most dependable forged steel Ball Valves in the industry. Our products are manufactured and tested in accordance with respective API, ASME, and ANSI standards. With features such as double block and bleed capabilities, secondary sealant injections, and spring energized self relieving seats, the SCV design offers many features and options beneficial for oil, gas, and liquid applications.

### Standard Features

- Sizes: 2" thru 24"
- Class: 150# thru 2500#
- Seats & Stem Secondary Sealant Injection
- Flange End Dimension: ANSI/ASME B16.5
- Butt-Weld End Dimension: ANSI/ASME B16.25
- Fire Safe Design: API 607/BS 6755
- Basic Design & Tested: API 6D
- ENP, F6, & 316 Trim Available
- Stem Extensions Available
- Ready-to-Ship Inventory
- Low FE Design
- NACE MR0175
- Low Torque & Piggable
- DPE Seats Available

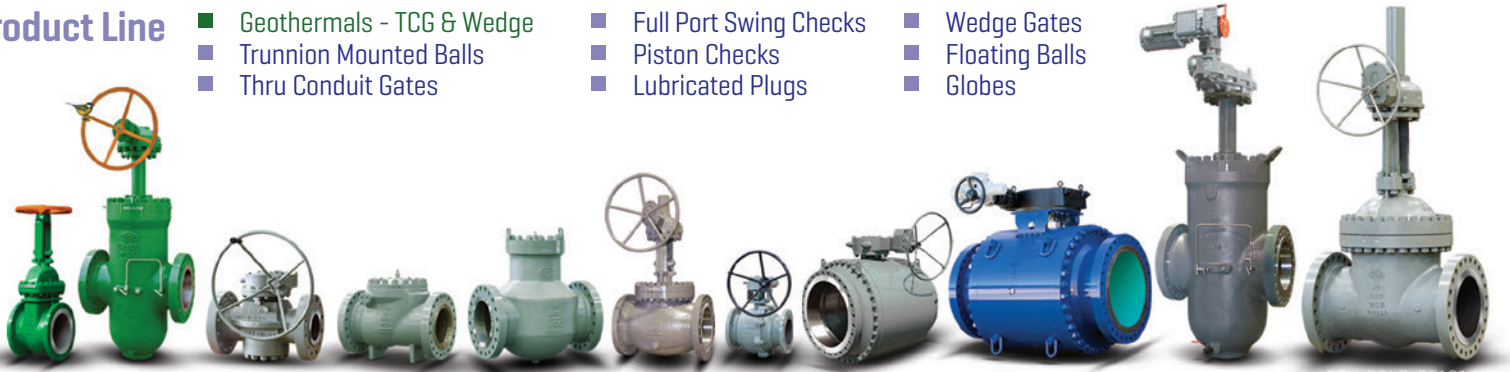


Call **[281] 482-4728** today for fast delivery!



### Product Line

- Geothermals - TCG & Wedge
- Trunnion Mounted Balls
- Thru Conduit Gates
- Full Port Swing Checks
- Piston Checks
- Lubricated Plugs
- Wedge Gates
- Floating Balls
- Globes



# PISTON CHECK VALVES

[www.scvvalve.com](http://www.scvvalve.com)

## RAPID CLOSING, BACKFLOW PREVENTION

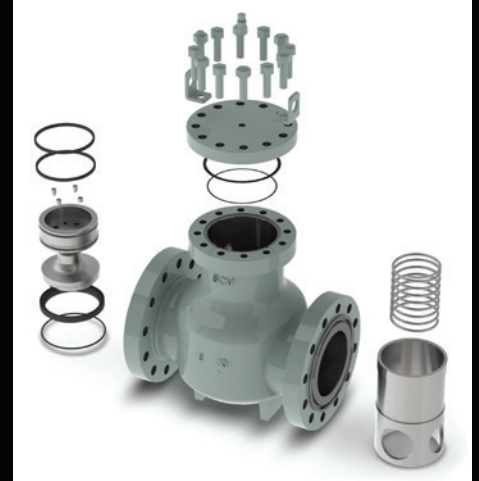
SCV VALVE manufactures a premium array of check valves. Our products are manufactured and tested in accordance with respective API, ASME, and ANSI standards. SCV Piston Check Valves are quiet operating valves that effectively prevent backflow. The "flapperless" design is gentle on the seat as the piston rises and lowers with increased and decreased flow rates. The SCV design offers many features and options beneficial for oil, liquid gas, and liquid applications.

### Standard Features

- Sizes: 2" thru 42"
- Class: 150# thru 1500#
- Basic Design: API 6D
- Wall Thickness: API 6D
- Face-to-Face: As stated
- Flange End Dimensions: ANSI/ASME 16.5
- Butt-Weld End Dimensions: ANSI/ASME B16.25
- Inspection & Testing: API 6D

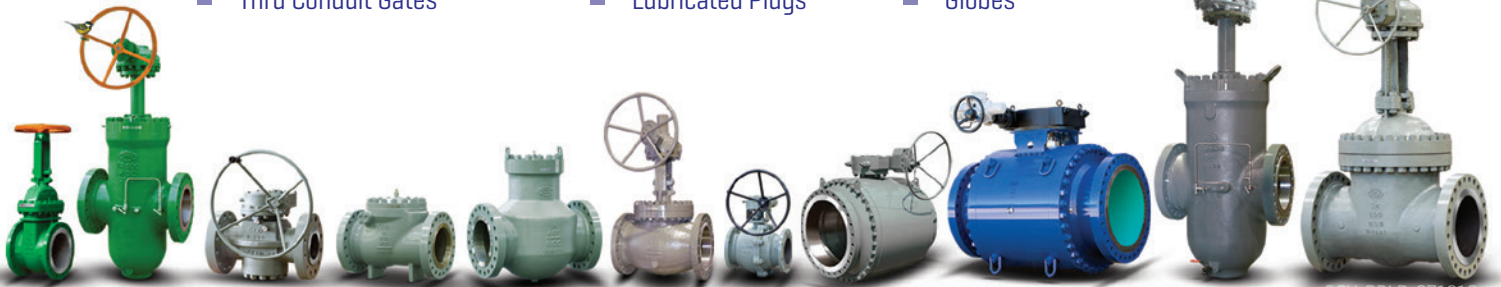


Call (281) 482-4728 today for fast delivery!



### Product Line

- Geothermals - TCG & Wedge
- Trunnion Mounted Balls
- Thru Conduit Gates
- Full Port Swing Checks
- Piston Checks
- Lubricated Plugs
- Wedge Gates
- Floating Balls
- Globes



SCV PPLP 071210

# FULL PORT SWING CHECKS

[www.scvvalve.com](http://www.scvvalve.com)

## FULL PORT FLOW & PIGGABLE, ZERO FLOW CLOSURE

SCV VALVE manufactures premium check valves in a variety of materials for many environments, temperatures and pressures. Our products are manufactured and tested in accordance to API, ASME, and ANSI standards.

The Full Port Swing Checks can be installed in horizontal or vertical, upward flow pipelines and utilizes a replaceable seat design for simple field service and replacement. Standard seat materials are ASTM A105 in carbon steel designs and A352 LCC in stainless steel designs. Other materials available.

### Standard Features

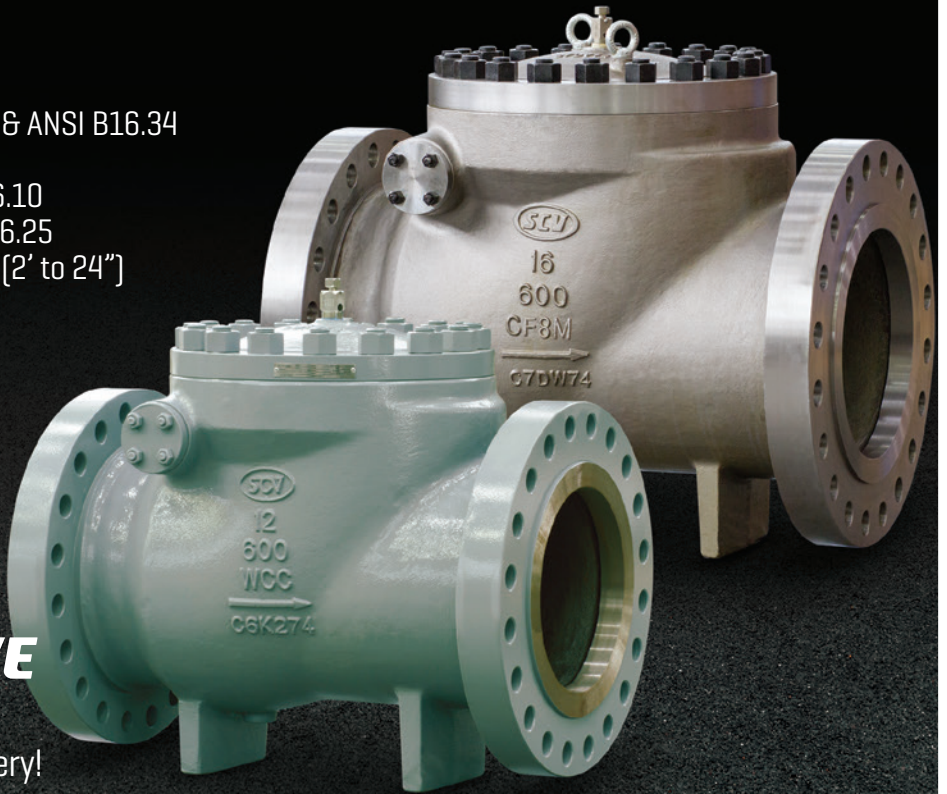
- Sizes: 2" thru 36"
- Class: 150# thru 2500#
- Basic Design, Inspected & Tested: API 6D & ANSI B16.34
- Wall Thickness: API 6D
- Face-to-Face Dimension: ANSI/ASME B16.10
- Butt-Weld End Dimension: ANSI/ASME B16.25
- Flange End Dimension: ANSI/ASME B16.5 (2' to 24")  
MSS SP-44 (26" & up)
- Fully Piggable

### Optional Features

- Extended Shaft Gland/Seal Assembly
- Extended Shaft Cover
- Lock Open Lever/Gear
- Slam Retarder



Call (281) 482-4728 today for fast delivery!



### Product Line

- Geothermals - TCG & Wedge
- Trunnion Mounted Balls
- Thru Conduit Gates

- Full Port Swing Checks
- Piston Checks
- Lubricated Plugs

- Wedge Gates
- Floating Balls
- Globes



SCV-PPL-071215

SANTA FE, TEXAS

Sales, Projects, Engineering, Manufacturing & Warehousing

3521 FM 646 Rd. North

Santa Fe, TX 77510

Phone: (281) 482-4728

Fax: (281) 482-9728



SCV Valve is one of the most trusted & respected brands in the valve marketplace. SCV Valve is built on a foundation of consistent performance with an unwavering commitment to quality.

SCV Valve takes sincere pride in our ability to manufacture both commodity and specialty valves with timely delivery capabilities and competitive prices. Industries served include the oil and gas, petrochemical, & industrial sectors. All sizes, pressure classes, & metallurgical compositions are managed in-house utilizing the strictest quality control measures to ensure total customer satisfaction.

Valves utilized throughout the industry must meet rigorous quality and production standards. SCV Valve has earned its API 6A, API 6D, ISO: 9001, CE-PED, & CRN certifications while operating under the API Q1 Quality Management System.



[www.scvvalve.com](http://www.scvvalve.com)