

# Gate Valves

Forged Steel

Sizes 3/8" - 2"

Class 800 - 2500



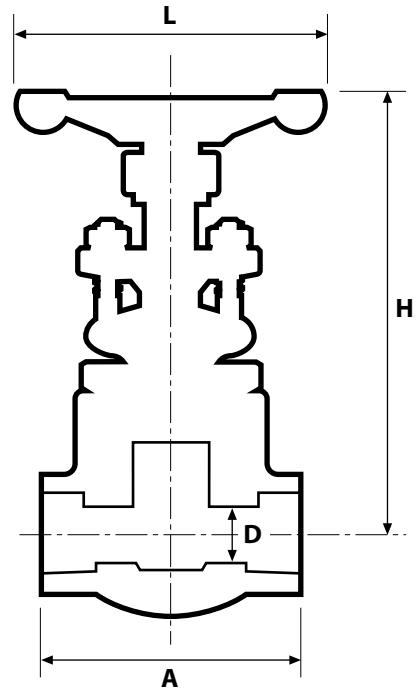
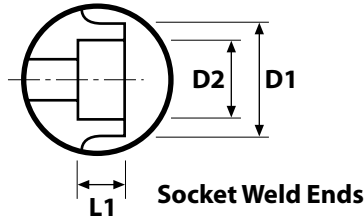
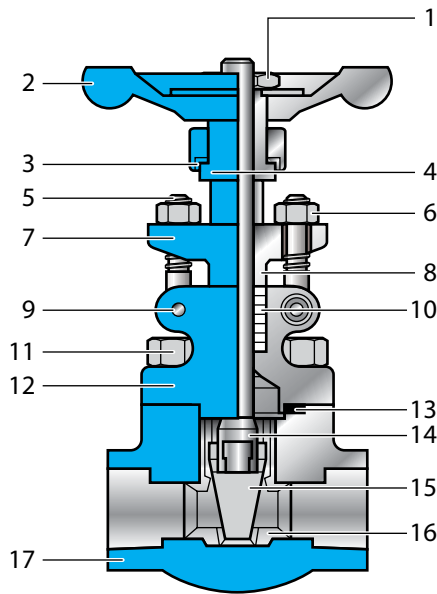
## Design and Manufacturing Standards

<b>Basic Design</b>	<b>API 602 &amp; ANSI/ASME B16.34</b>
<b>Socket Weld End Dimension</b>	<b>ANSI/ASME B16.11</b>
<b>Thread End Dimension</b>	<b>ANSI/ASME B1.20.1</b>
<b>Inspection &amp; Testing</b>	<b>API 598</b>



Southern California Valve

## 3/8" - 2"



### BILL OF MATERIAL

NO	NAME OF PART	MATERIAL
1	LOCK NUT	CARBON STEEL AISI 1020
2	HANDWHEEL	MALLEABLE IRON
3	WASHER	ASTM A276 430
4	STEM NUT	ASTM A276 410
5	EYE BOLT	ASTM A276 410
6	EYE BOLT NUT	ASTM A194 2H
7	GLAND FLANGE	ASTM A216 WCB
8	PACKING GLAND	ASTM A276 410
9	EYE BOLT PIN	ASTM A276 410
10	PACKING	GRAPHITE
11	BOLT	ASTM A193 B7
12	BONNET	ASTM A105 - Also available in F5, F11, F304, F316, F51, F53, F347, and F321
13	GASKET	GRAPHITE
14	STEM	ASTM A276 410
15	WEDGE	ASTM A276 420
16	SEAT RING	ASTM A276 410+HF
17	BODY	ASTM A105 - Also available in F5, F11, F304, F316, F51, F53, F347, and F321

### DIMENSIONS OF SOCKET WELD ENDS

VALVE SIZE	nps	.375	.5	.75	1	1.25	1.5	2	VALVE SIZE	nps	.375	.5	.75	1	1.25	1.5	2	D	A	H2	L	L1																														
																							dn	10	15	20	25	32	40	50	dn	10	15	20	25	32	40	50	in	mm	in	mm	in	mm	in	mm						
D	in	.39	.51	.71	.94	1.14	1.44	1.83	A	in	3.11	3.62	4.37	4.72	4.72	5.51	7.01	H2	in	6.22	6.46	7.64	8.70	9.61	11.10	12.99	L	in	3.94	3.94	4.92	6.30	6.30	7.09	7.87	L1	in	.38	.38	.5	.5	.5	.5	.63	mm	9.6	9.6	12.7	12.7	12.7	12.7	15.9
	mm	10	13	18	24	29	36.5	46.5		mm	79	92	111	120	120	140	178		mm	158	164	194	221	244	282	330		mm	100	100	125	160	160	180	200		mm	9.6	9.6	12.7	12.7	12.7	12.7	15.9								
D1	in	1.34	1.34	1.57	1.89	2.52	2.52	3.07	L	in	3.94	3.94	4.92	6.30	6.30	7.09	7.87	L1	in	.38	.38	.5	.5	.5	.5	.63	mm	9.6	9.6	12.7	12.7	12.7	12.7	15.9																		
	mm	34	34	40	48	64	64	78		mm	100	100	125	160	160	180	200		mm	9.6	9.6	12.7	12.7	12.7	12.7	15.9																										
D2	in	.69	.86	1.07	1.33	1.68	1.92	2.41	L	in	3.94	3.94	4.92	6.30	6.30	7.09	7.87	L1	in	.38	.38	.5	.5	.5	.5	.63	mm	9.6	9.6	12.7	12.7	12.7	12.7	15.9																		
	mm	17.6	21.8	27.1	33.8	42.6	48.7	61.1		mm	100	100	125	160	160	180	200		mm	9.6	9.6	12.7	12.7	12.7	12.7	15.9																										
-	in	/	/	/	/	/	/	/	L1	in	.38	.38	.5	.5	.5	.5	.63	mm	9.6	9.6	12.7	12.7	12.7	12.7	15.9																											
	mm	/	/	/	/	/	/	/		mm	9.6	9.6	12.7	12.7	12.7	12.7	15.9																																			